



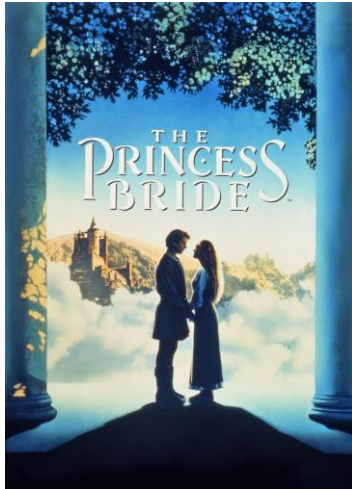
FOR IMMEDIATE RELEASE

Media Contact:
Nick Dobreff, Communications and Creative Director
616.485.3913 (m) - 303.308.2477 (o)
ndobreff@coloradosymphony.org

ANNOUNCING THE PRINCESS BRIDE IN CONCERT WITH THE COLORADO SYMPHONY

Witness this timeless classic at Boettcher Concert Hall on August 3 and 4, 2024

May 20, 2024 – Denver, CO – Announcing The Princess Bride In Concert with the Colorado Symphony, taking place at Boettcher Concert Hall on August 3 and 4, 2024.



Fencing, fighting, torture, revenge, giants, monsters, chases, escapes, true love, miracles... Experience one of the most beloved films of all time as never before...with the power of a full symphony orchestra performing the entire musical score live-to-picture.

Directed by Rob Reiner, ***The Princess Bride*** features an all-star cast including Robin Wright, Cary Elwes, Wallace Shawn, Mandy Patinkin, Chris Sarandon, Billy Crystal, Carol Kane, Christopher Guest, Fred Savage and André the Giant.

The great Peter Falk narrates this romantic tale of the beautiful maiden, Buttercup, and her one true love, a young farm hand named Westley. After he's captured by a ruthless pirate and presumed dead, Buttercup's unhappy marriage to the horrible Prince Humperdinck seems inevitable.

But before the wedding can take place, she's kidnapped by three outlaws and it's up to a mysterious Man in Black to come to her rescue...

Now for the first time, composer Mark Knopfler's unforgettable score has been specially arranged for symphony orchestra. Missing this cinematic concert experience would be *inconceivable!*

So, in the words of Miracle Max... *"Have fun stormin' the castle!"*

© The Princess Bride Limited. All Rights Reserved.

EVENT INFORMATION:

What: The Princess Bride In Concert with the Colorado Symphony

Where: Boettcher Concert Hall

When: SAT AUG 3, 2024 at 7:30pm and SUN AUG 4, 2024 at 2:30pm

Tickets: [Available now at coloradosymphony.org](https://coloradosymphony.org)

###



MEDIA CONTACT:

For more information or to request interviews, please contact:

Nick Dobreff, Communications and Creative Director

ndobreff@coloradosymphony.org - 303.308.2477 (o)

For high-resolution, downloadable images of the Colorado Symphony, contact:

ndobreff@coloradosymphony.org

Support for the 2024/25 Colorado Symphony Season is provided by: The Scientific & Cultural Facilities District (SCFD), Genesee Mountain Foundation, Denver Arts & Venues, Bonfils-Stanton Foundation, and the Colorado Symphony Guild.

TICKETS:

Tickets to Colorado Symphony events are available online at coloradosymphony.org/tickets, by phone at 303.623.7876, and in person at the Boettcher Concert Hall Box Office, Denver Performing Arts Complex, 1000 14th Street. The Box Office is open Monday - Friday, 10 a.m. - 5 p.m., Saturday, 10a.m– 5 p.m., and two hours prior to each performance.

ABOUT THE COLORADO SYMPHONY

One of the leading orchestras in the United States, the Colorado Symphony Association is a not-for-profit 501 (c)(3) organization performing more than 150 concerts annually at Boettcher Concert Hall in downtown Denver and across Colorado. Led by Principal Conductor Peter Oundjian, the Colorado Symphony is home to eighty full-time musicians, representing more than a dozen nations, and regularly welcomes the most celebrated artists from the world of symphonic music and beyond. The orchestra celebrated its Centennial during the 2023/24 concert season. In the last year, the Colorado Symphony served over 340,000 people attending live performances at concert and non-traditional venues throughout Colorado's Front Range. Recognized as an incubator of innovation, creativity, and excellence, the Colorado Symphony continually expands its reach through in-person and virtual education programs, outreach, and programming. The Colorado Symphony partners with the state's leading musical artists, cultural organizations, corporations, foundations, sports teams, and individuals to expose diverse audiences to the transformative power of music. To learn more, visit coloradosymphony.org.